

The SPE TORCH is an Infra red, hand held illuminator for under door use. Running from just 3 pcs rechargeable batteries and with no cables or heavy external battery packs.

The slim 4mm specially designed plate is inserted under a door. The light output angles at ~45° into the space beyond the door for more complete covering.

Aside from association with under door cameras, the SPE TORCH is also effective for random checks of rooms that already have covert B&W cameras installed but which do not have infra red for viewing in pitch black. The SPE TORCH is constructed from solid machined aluminium.

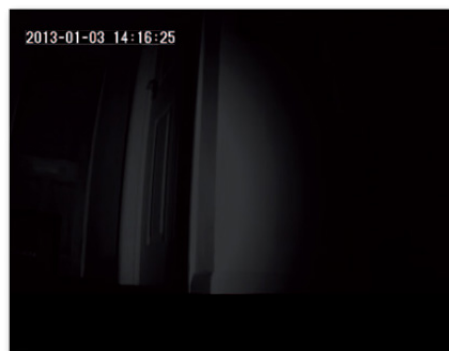


### Technical data

Dimensions	Dia.38 x 300 mm
Thickness	4mm
Weight	0.45 kg
Power	3 pieces 18650 Li-Ion batteries
Illumination IR	940 nm
Construction	Aluminium CNC
Working temperatures	-10°C (14F°) to 50°C (122F°)

### Ordering information

Part No	Description
605 000 605	SPE Under door Torch (4mm)



Without IR light



With IR light

### The Kit Includes.

1 SPE illumination torch, 3pcs 18650 batteries, 1 carrying case.